

# BOSQUE ROMANO: A PROJECT FOR THE ECOLOGICAL RESTORATION OF PERI-URBAN AND HISTORIC AREAS

García-Moreno, P.,<sup>1</sup> López Barquero, P.,<sup>1</sup> Martínez-Arnal, N.,<sup>1</sup> García de Alcaraz-Peñas, M.A.,<sup>1</sup> García-Pascual, A.,<sup>1</sup> González-Vivancos, M.<sup>1</sup> & Sánchez-Balibrea, J.M.<sup>1\*</sup>

\*lead presenter

1. C/Medieras, 6 entlo izq CP 30201 Cartagena, Asociación de Naturalistas del Sureste (ANSE), SPAIN, [araar@asociacionanse.org](mailto:araar@asociacionanse.org)

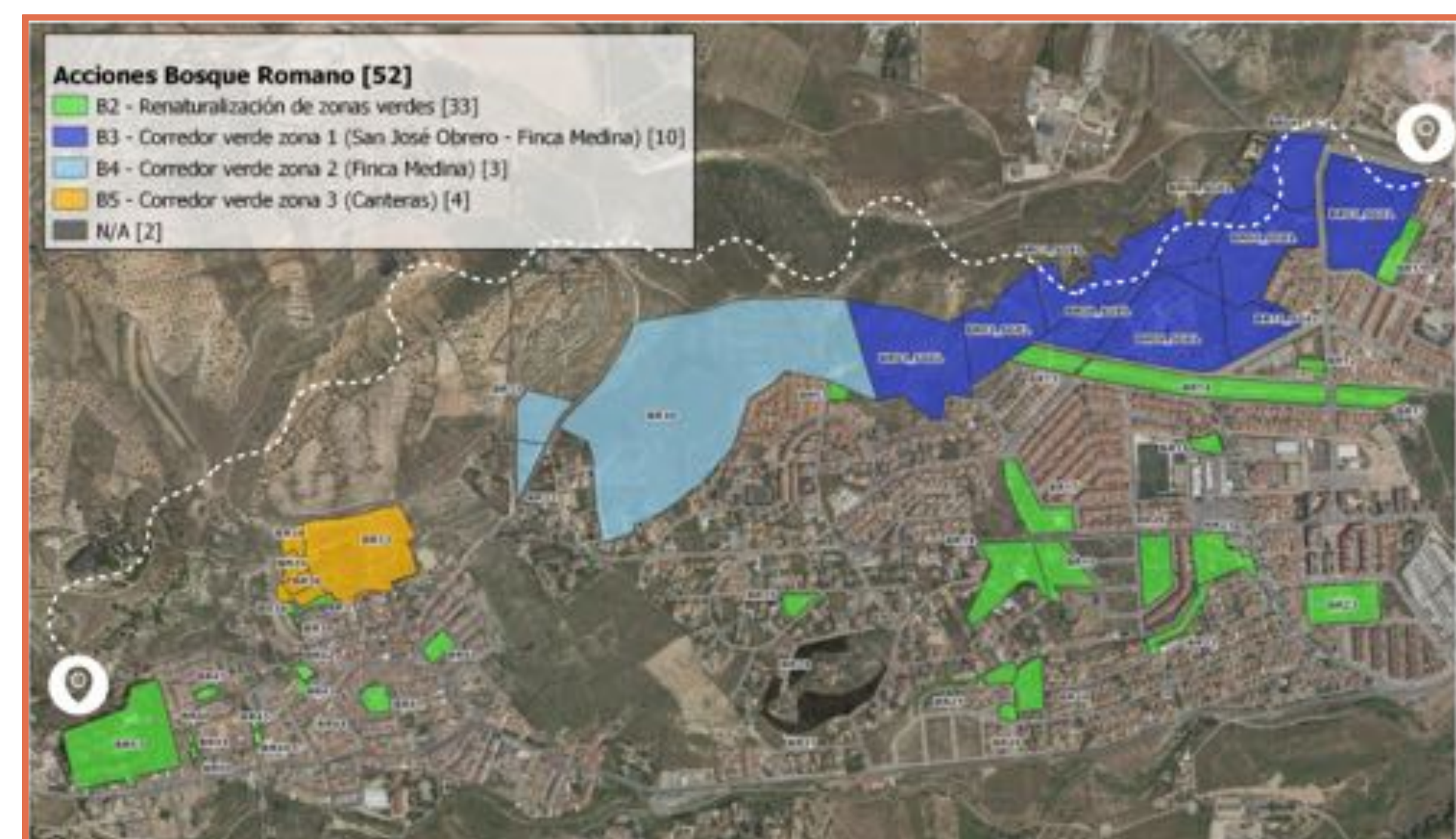
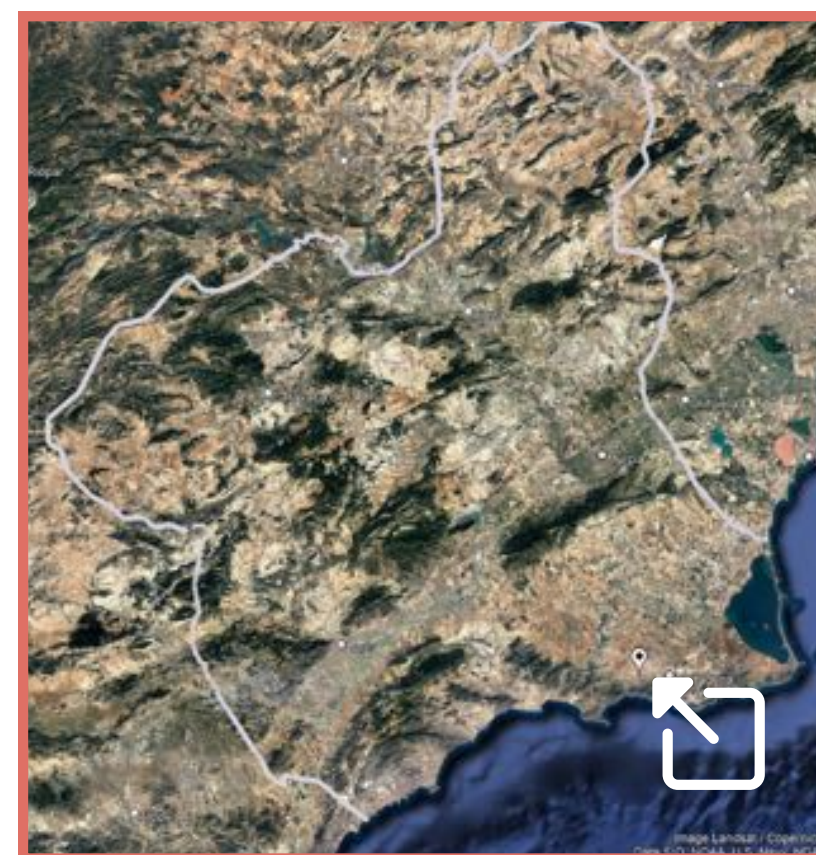
"Bosque Romano" (2022–2025) is a project for the renaturalization that will connect two green areas in the town of Cartagena (Region of Murcia). One of the areas is part (aprox 2 ha.) of a roman quarry acquired by ANSE in 1999 due to their high historical and ecological value, considered as an Historic Site.

The project is coordinated by the City Council of Cartagena and involving ANSE, ARBA and CETENMA, is supported by the Biodiversity Foundation of the Ministry for Ecological Transition and Demographic Challenge (MITECO) in the framework of the Plan for Recovery, Transformation and Resilience (PRTR), financed by the European Union - NextGenerationEU.

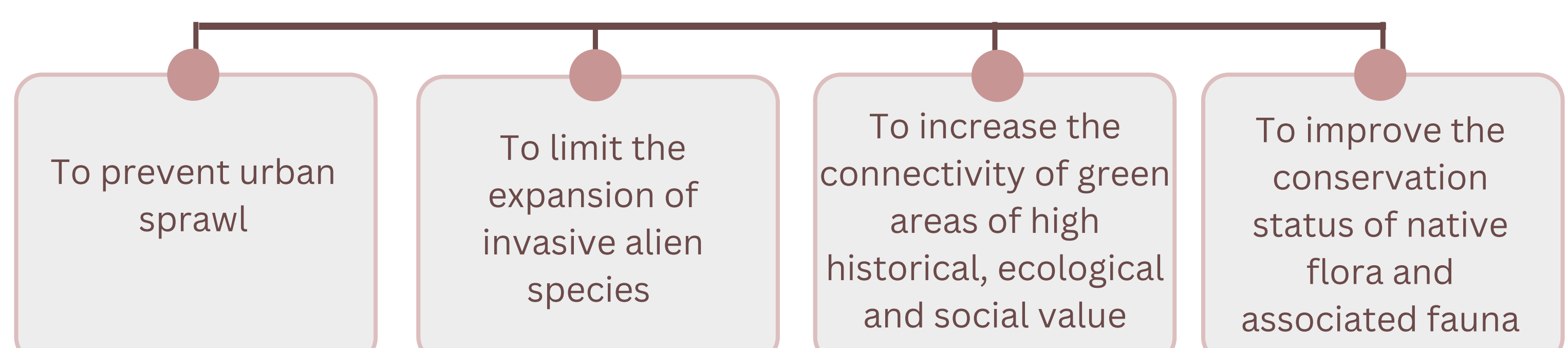
For more information, please visit the project website: [www.bosqueromano.cartagena.es](http://www.bosqueromano.cartagena.es)

## PROJECT ACTIONS

- Acquisition of private land, including 15.7 hectares that includes part of the roman quarry Historic Site, declared as an Asset of Cultural Interest and with important natural values.
- Renaturalization of more than 30 hectares in the municipality of Cartagena, including green areas and public gardens, and establishing custody agreements with private property owners.
- Development of a 2 km green corridor that will connect the city with a Natura 2000 area (SIC ES6200015 and SPA ES0000264 La Muela-Cabo Tiñoso).
- Land restoration, including the removal of debris.
- Elimination of invasive alien species.  
*Action has been taken on 51 species.*
- Production of native species in the nursery managed by ANSE, for subsequent plantations in the restoration areas.  
*To date, 32.000 seedlings have been produced in the nursery out of the 40.000 to be produced and planted by the end of the project.*
- Work is being carried out with 35 species of native flora, including several Ibero-African species, such as *Tetraclinis articulata* and *Chamaerops humilis*.
- Involvement of society.
- Environmental education program.  
*35 activities carried out.  
19 schools involved.  
1.086 students.*
- Environmental volunteering.  
*22 activities carried out.  
630 participants.*
- Exchange of exotic flora for native flora to be planted in private gardens.  
*3 exchanges carried out.*
- Elaboration of didactic guides.  
*3 guides developed.*
- Implementation of community composting.
- Talks and training for neighbors and related people.  
*7 dissemination activities.*



### FOR WHAT PURPOSE?



\*Results shown are as of 30/08/2023