

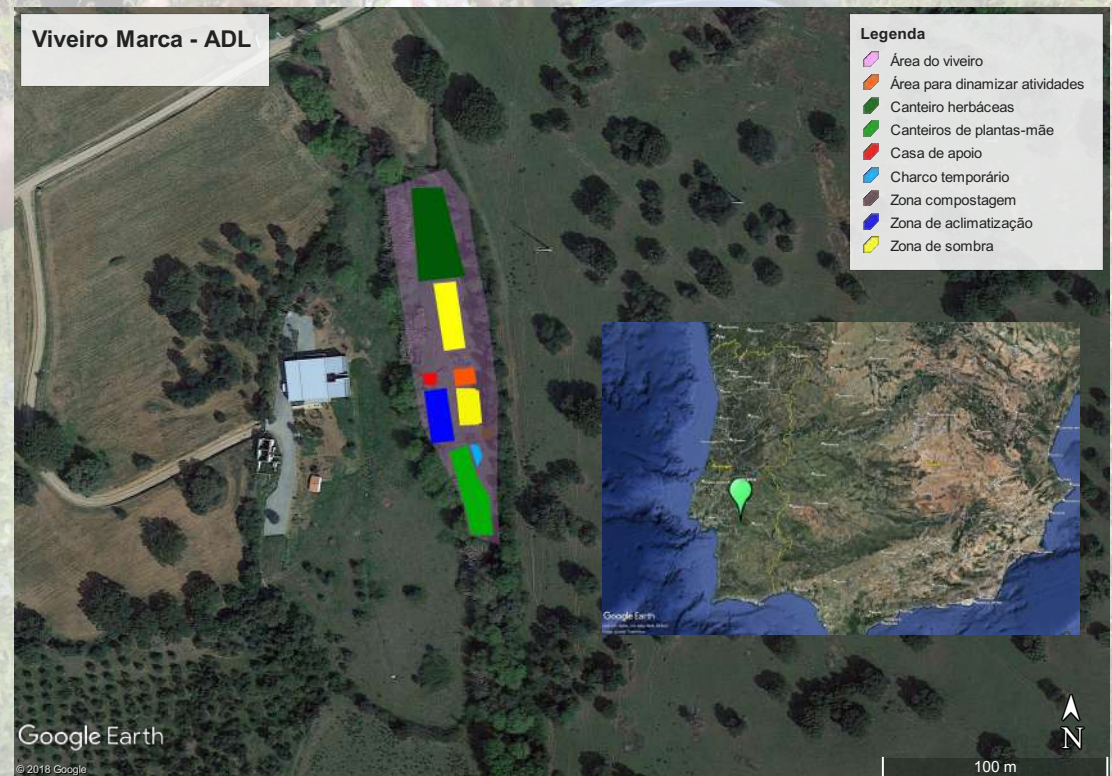
Contribution of Mediterranean Ecosystem Conservation Center education activities on Mediterranean Flora Conservation in Portugal



Coelho, R., Mattioli, M. & Ribeiro, H.
28th October 2023

Mediterranean Ecosystem Conservation Centre

- Implemented by Marca-ADL in 2015
- Marca-ADL is a local development association with significant activity in the environmental area
- Focal point of the center is a native plant nursery



Educational activities integration

A group of people, including men and women of various ages, are engaged in a tree-planting activity in a field. They are seen from behind, working with young saplings. One man in the foreground wears a blue and white striped shirt and white shorts. Another man wears a red cap with 'POLSKA' on it. The background shows more people and a line of trees under a bright sky.

- **Transdisciplinary**
- **Inclusion of different types of communities, through partnerships and networks**
- **In articulation with different territories, enabling a local, regional, national and international intervention**

Educational activities type:

Environmental education

- **Workshops and activities in schools**
- **Workshops in the Center**
- **Cleaning activities**
- **Nature Walks**
- **Children to Adults**



Educational activities type:

Environmental volunteering

- **Plant Nursery Maintenance works**
- **Plant Nursery infrastructure**
- **Planting activities**
- **Invasive species control**
- **Seed collection**

- **Youngster to Adults**
- **Short-term to long-term**



Educational activities type:

Nature and Creative tourism activities

- **Handicrafts workshops**
- **Creative activities**
- **Using natural patrimony together with local knowledge / traditions**
- **Children to Adults**



Educational activities type:

Technical support to clients

- **Free technical support is provided to plant nursery clients to ensure sustainable green areas, accordingly to spontaneous flora and objective for the area:**
 - **Species selection and plant sizes**
 - **Best timings to plant**
- **We also offer planting services (paid)**



Results – Plant Nursery

- Production of around 150 native taxa, particularly from Portuguese Mediterranean ecosystems
- 20.000 plant annual production
- Particular focus on shrubs diversity
- Regionally collected seeds
- In specific cases vegetative reproduction

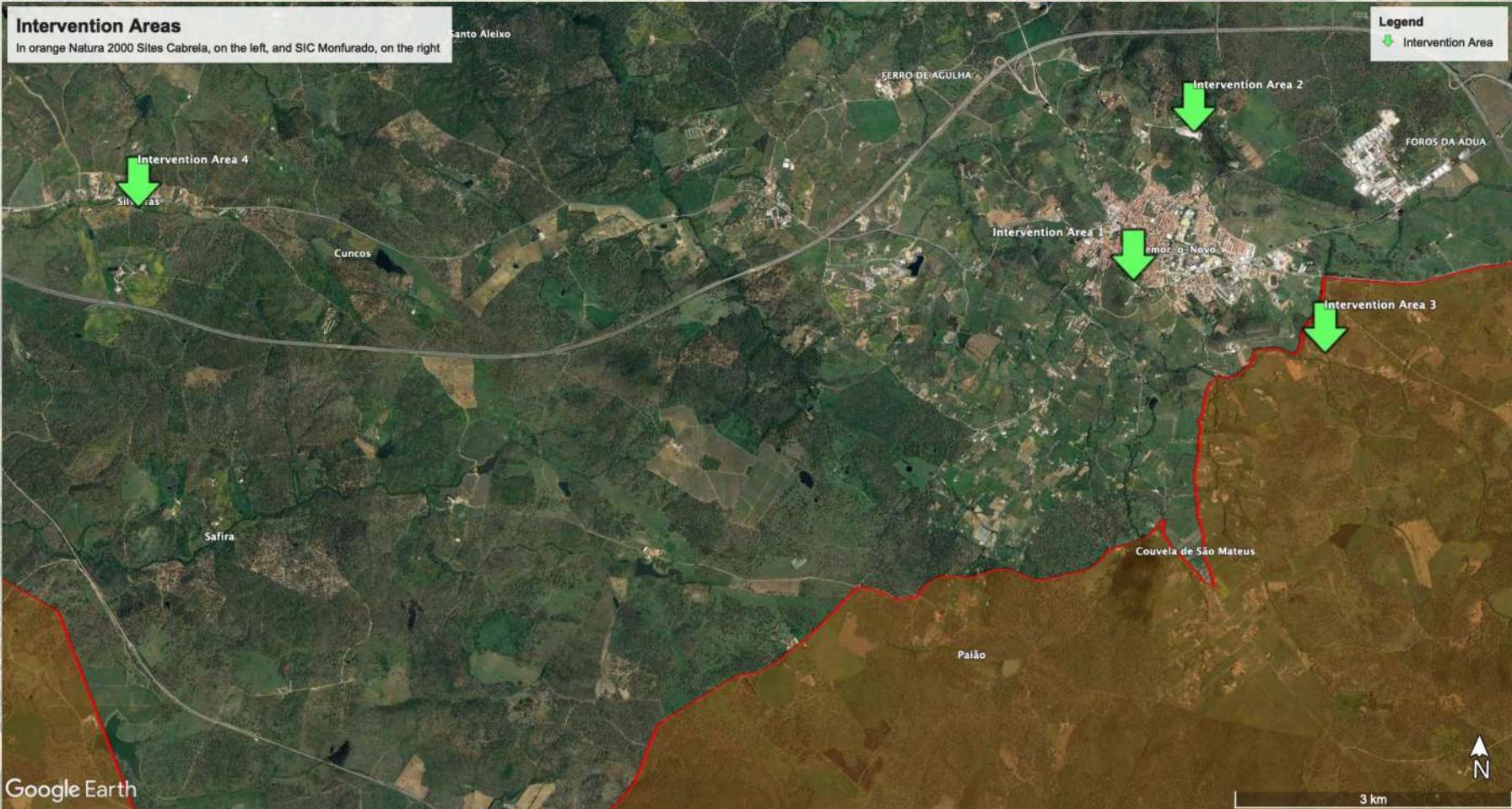


Results – Engagement

- **5 annual long-term volunteers (6 – 12 months)**
- **200 annual short-term volunteers (1 day to 14 days)**
- **Around 1000 annual participants in the other educational activities**
- **Engagement of individuals and organizations (NGOS, entreprizes, etc)**



Results – Examples of rehabilitation of green areas



Results – Area 3



Google Earth

Results – Area 4



Thanks!

Feel free to contact us

www.marca-adl.pt

Social networks: [@marca.adl.ngo](https://www.instagram.com/marca.adl.ngo)

(Youtube | Instagram | LikedIN | Facebook)

